

Digital Photography and Imaging Exam Review- S1

Basic Camera Care:

Increase orbs(dots)/quality/new cool, dry place troubleshooting soft, lint free

- To avoid damage, your camera should be stored in a _____ away from windows, furnaces, and damp basements.
- If your camera is not functioning properly, you should check the manual for _____ tips
- Keeping your camera and it's lens clean is important because dust particles can show up as _____ in photo, improves the _____ of your photos, and keeps your camera looking _____.
- Use a _____ cloth to clean your camera's lens
- To _____ the life of your camera's batteries you should charge them when the battery is close to life, and remove battery as soon as charge is complete and Remove the batteries from the camera when camera will be stored for long periods of time

Camera accessories, parts, features and functions:

multiple Sd cards/compact flash cards/memory sticks point and shoot flash light rays/project midrange
SLR/point and shoot/midrange

- _____, _____, _____, and all other types of memory cards
- The three categories of digital cameras are _____, _____, and _____.
 - An SLR camera allows you to interchange _____ lenses
 - A _____ camera is small, lightweight, and can be easily transported
- _____ is reasonable in price but offers some manual capabilities
- The camera's lens sole purpose is to collect _____ coming from a scene in front of the camera and _____ them as images onto either a piece of film, or an image sensor.
- The camera's _____ is a tool on the camera that adds additional light in situations that do not have enough.

Composition:

Use the work bank to fill in the following statements

Framing Composition rule of thirds tension S-curves

_____ refers to how you arrange your image in a picture plain.

The compositional guideline _____ can be described as dividing your plane into thirds, and placing the subject off center on one of those thirds.

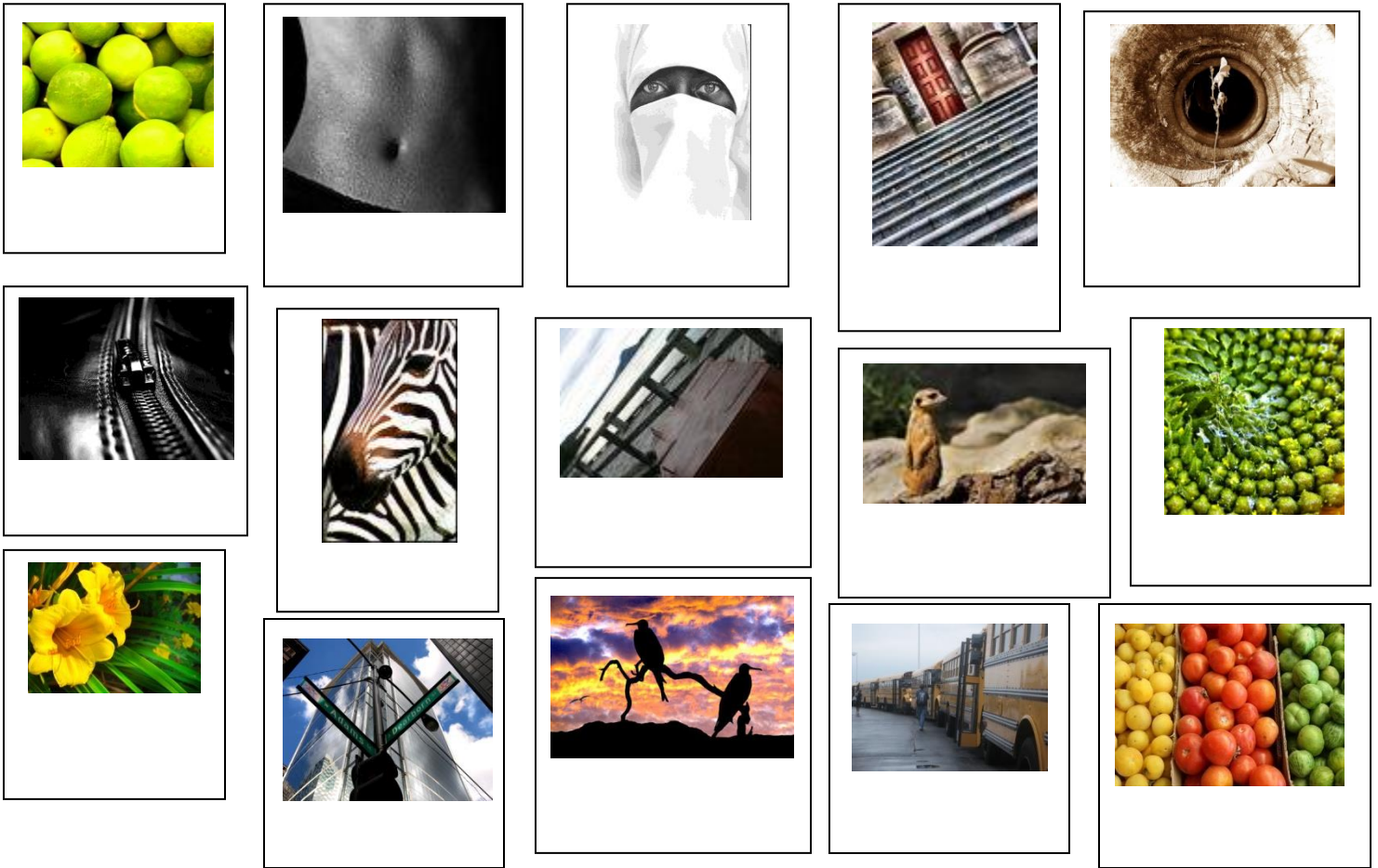
_____ you need to create chaos within your image, often breaking other compositional guidelines.

_____ is the compositional guideline that refers to images that have been emphasized by surrounding objects.

_____ are a compositional guideline that is psychologically appreciated based on human anatomy/IT IS FOUND IN NATURE!

Examples of Compositional Rules – Label the following pictures

Pattern/ repetition framing tension s-curve rule of thirds 50/50 vs 33/66 layering centering leading lines



Camera feature or mode:

Write the name of what these icons control.

Flash Shaky Hands Exposure Macro



Camera Care:

Separate the statements on camera care into the proper column of Do's and Don'ts

- You do not have to turn off the camera before removing or disconnecting the power source or cable, or removing the battery or memory card.
- You should always remove the camera battery if the camera is going to be stored for long periods of time.
- You should keep your camera dry and never expose it to extreme hot or cold temperatures
- You should never place your camera in direct sunlight for prolonged times or in a car when it is hot
- You should use a paper towel to wipe off the lens

- You should use a clean soft lint free cloth to clean your lens
- You do not need to keep your camera on a strap or in a camera bag is possible
- You should always remove the memory card gently to avoid damage.

DO

DO NOT

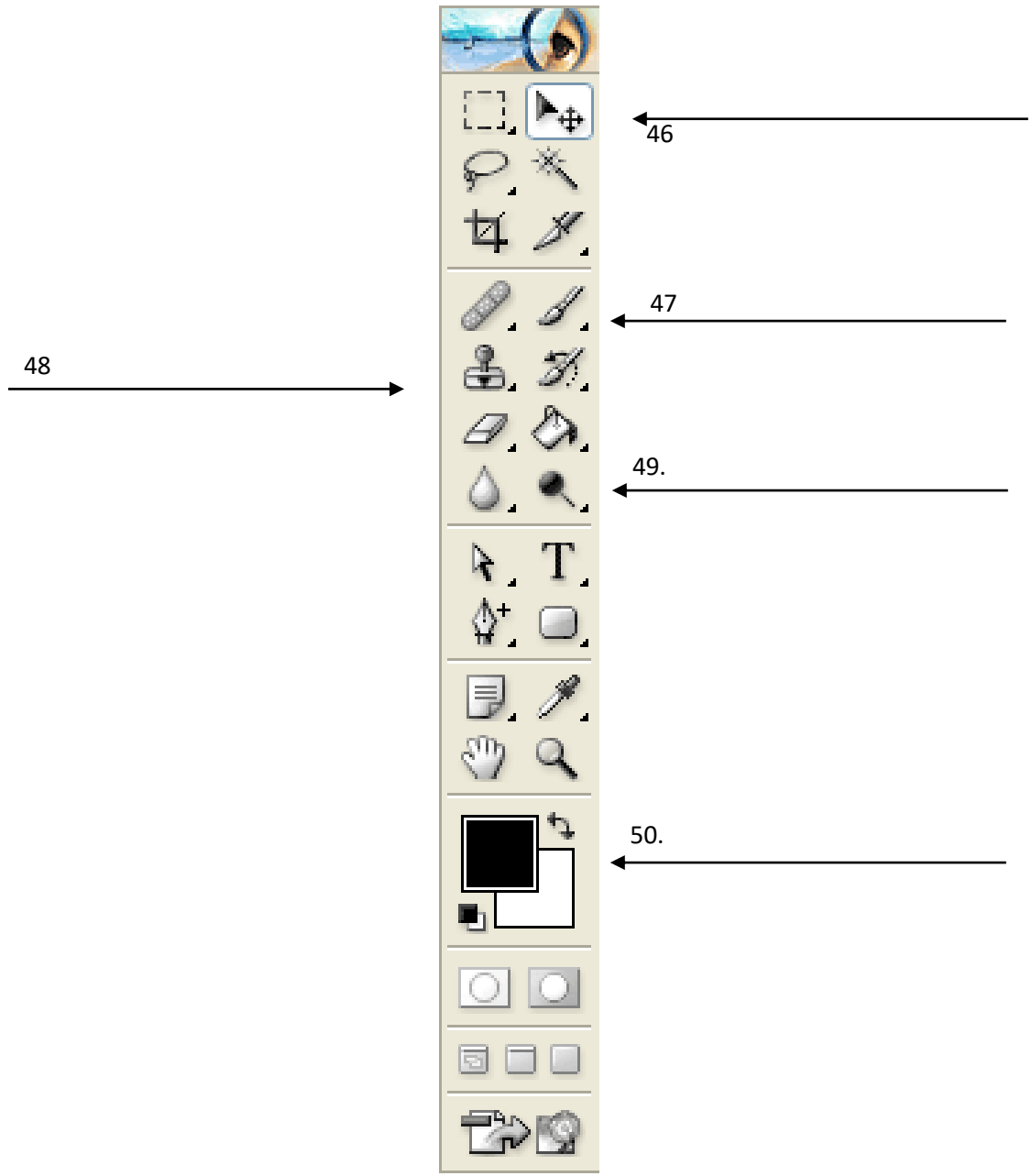


Photoshop tools and techniques

Draw a line from the word to the correct definition.

Desaturate	keyboard shortcut for copying
<i>Control Z</i>	keyboard short cut to undo.
Levels, brightness/contrast, and curves	lower the opacity of certain layers and rearrange layers
Lasso tool	make adjustments to whatever tool you are currently working on.
Hue/Saturation	takes into account the surrounding pixel colors and attempts to match it.
Left and right brackets	keyboard shortcut for copying
<i>Layers pallet</i>	keyboard shortcut for cutting
<i>Control C</i>	resize an image, remove unwanted proportions, and improve the composition.
<i>Control X</i>	one way to adjust the tonal range in your image.
<i>Crop tool</i>	selection tool that makes selections based on like colors
Healing brush is	allows you to alter the intensity and color of an image
Magic wand	removes color from and image, converting it to grayscale, but allows the image to remain in RGB.
Options pallet	selects areas according to freeform shapes.

Photography Tools



A) Foreground/background color
D) Dodge Tool

B) Clone Stamp Tool
E) Paint Brush Tool

C) Move Tool
AA) Burn Too